



INDOFINE Chemical Company, Inc.

121 Stryker Lane, Bldg. 30, Suite 1 • Hillsborough, NJ 08844 • U.S.A.

Phone: (908) 359-6778 • FAX: (908) 359-1179

website: www.indofinechemical.com

e-mail: chemical@indofinechemical.com

CERTIFICATE OF ANALYSIS

Catalog Number: 06-782

Product Name: **KUKOAMINE A**

CAS Number: [75288-96-9]

Lot Number: 1803914

Chemical Formula: C₂₈H₄₂N₄O₆

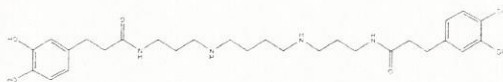
Molecular Weight: 530.66

Appearance: Dark green powder

Loss on Drying: 1.34%

Storage: Store in a cool, dry place

Purity(HPLC): 97.10%





INDOFINE Chemical Company, Inc.

121 Stryker Lane, Bldg. 30, Suite 1 • Hillsborough, NJ 08844 • U.S.A.

Phone: (908) 359-6778 • FAX: (908) 359-1179

website: www.indofinechemical.com

e-mail: chemical@indofinechemical.com

HPLC ANALYSIS

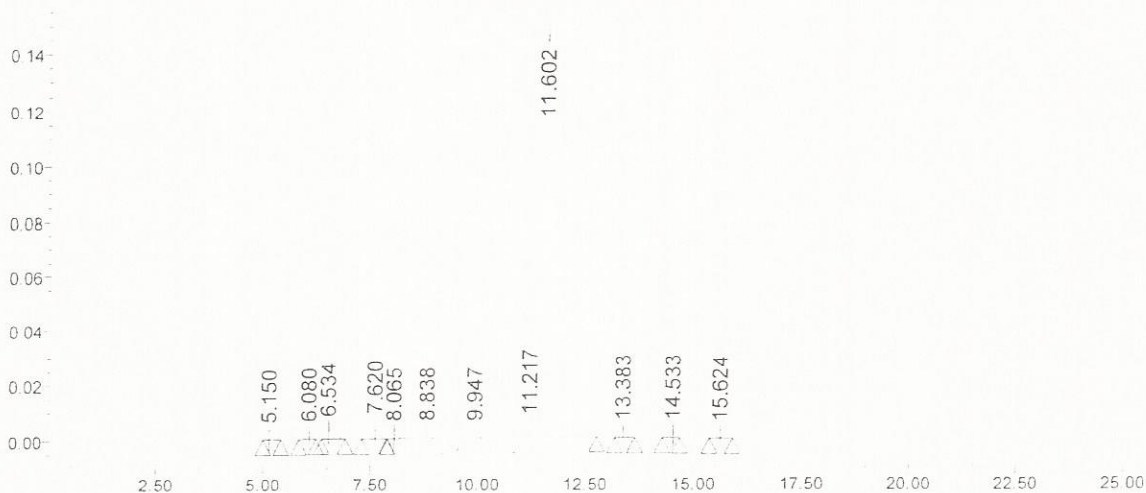


Catalog No.: 06-782
Product Name: Kukoamine A
Lot No.: 1803914

SAMPLE INFORMATION

Sample Name:	Kukoamine A	Acquired By:	System
Sample Type:	Unknown	Sample Set Name:	
Vial:	78	Acq. Method Set:	Kukoamine A
Injection #:	1	Processing Method:	Samples
Injection Volume:	10.00 ul	Channel Name:	280.0nm
Run Time:	25.0 Minutes	Proc. Chnl. Descr.:	PDA 280.0 nm

Auto-Scaled Chromatogram



Peak Results

	RT	Area	% Area	USP Plate Count	USP Resolution
1	5.150	3186	0.07	5701.78	
2	6.080	6067	0.14	11506.21	3.55
3	6.534	23940	0.56	12281.74	1.83
4	7.620	31754	0.74	14841.10	4.34
5	8.065	8998	0.21	11356.31	1.56
6	8.838	6815	0.16	14474.19	2.58
7	9.947	5686	0.13	24532.55	3.93
8	11.217	24844	0.58		
9	11.602	4181222	97.10	2272.80	
10	13.383	5493	0.13	32013.25	2.98
11	14.533	5497	0.13	66851.24	4.23
12	15.624	2656	0.06	69109.49	4.19